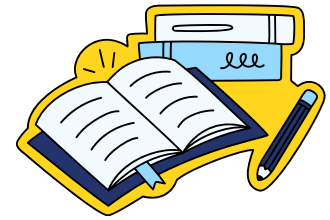




Leftwich

Community Primary School

Ready Respectful Safe



NEWS



Today is World Mental Health Day. In assembly this morning we shared the text 'My Heart Has Feelings' and talked about ways we can help ourselves to manage our feelings. The children came up with great ideas to ensure we have good mental health and can manage our emotions.

Next Friday is the 11th anniversary of 'Show Racism The Red Card'. This annual event is organised by the UK's largest anti-racism educational charity. We will remind children of the importance of equality and discuss ways in which we can all help to stamp out racism. Children may come to school wearing something red with non-uniform if they wish to, however they can simply wear their uniform if they like.



DIARY DATES

- Saturday 11th October 9.30am - 11am - 'Stay and Play' morning for Reception 2026
- Tuesday 14th and Thursday 16th October 3.30pm - 6.30pm - Parents' Evenings
- Friday 17th October - **Wear Red to show Racism the Red Card**
- Tuesday 21st October School Photos 8.30am onwards for siblings.
- Wednesday 5th November - Fireworks Night
- Wednesday 4th December - Christmas Discos
- Monday 15th December - Key Stage 2 Carol Service at Emmanuel Church 1.30pm - 2.30pm

SPECIAL MENTIONS



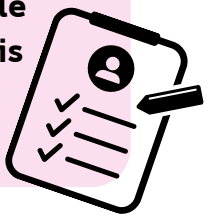
Well done to:

- Hallie from Year 1 for amazing writing. Hallie has written The Three Little Pigs at home and really challenged herself. 🥰
- Zachary from Year 2 for working really hard to improve his writing, concentrating and for being kind and stepping up to the challenge of Year 2. 🙌
- Coby and Ellie in Year 3 for their amazing animations in computing. 🥰
- Aivah from Year 6 for working incredibly hard to learn her times tables, which helped her to use BODMAS in her maths lessons. 🔥

ATTENDANCE

Congratulations to our Year 6 children who have won our class attendance challenge this week with 99.6%

This week our whole school attendance is 96.8%



BIKE TO SCHOOL WEEK

Next week is Cycle to School Week. We would like encourage as many children as possible to choose to bike to school to help us promote health and protect the environment.

Please make sure the children wear suitable helmets for safety.

Thank you.

